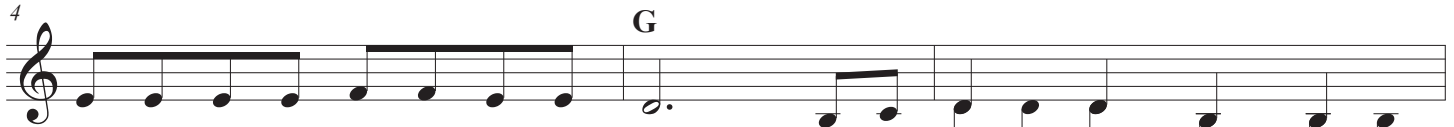


Polly Wolly Doodle

Traditional American



1.Oh, I went down south for to see my Sal, Sing
 (2.Oh, my) Sal, she is a _____ maid - en fair, Sing
 (3.Oh, a) grass - hopp - er sitt - in' on a rail - road track Sing



poll - y woll - y dood - le all the day.

See my Sall - y she's a
 With curl - y eyes and
 A pick - in' his teeth with a



spunk - y gal Sing
 laugh - ing hair, Sing
 car - pet pick Sing

poll - y woll - y dood - le all the day. Fare thee



well, fare thee well fair thee well my fair - y day. For I'm goin' to Louis-i - an - a for to



see my Sus - y - ann - a sing poll - y woll - y dood - e all the day.

2.Oh my
 3.Oh a

